

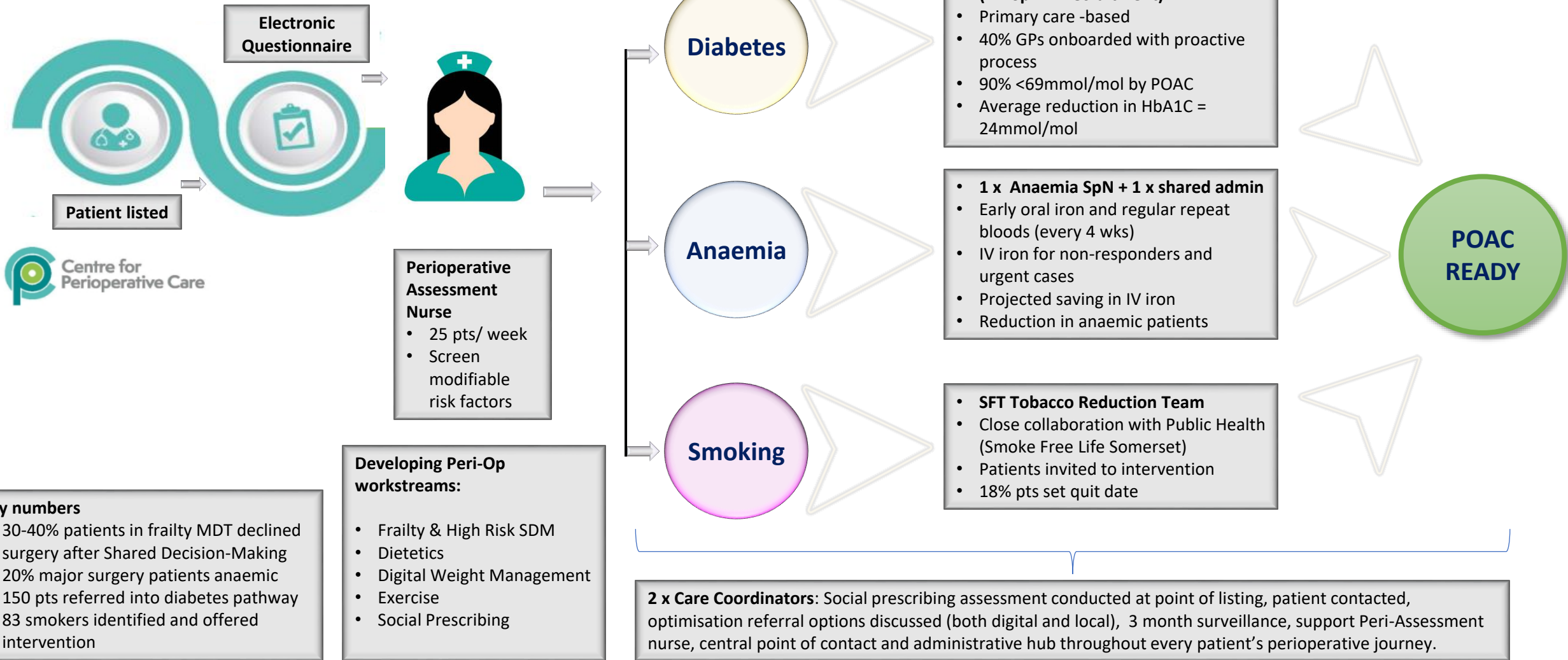
A large graphic of many blue birds flying in a curved path from the top left towards the bottom right.

# Pre-screening and optimisation in Somerset. One way of doing things.

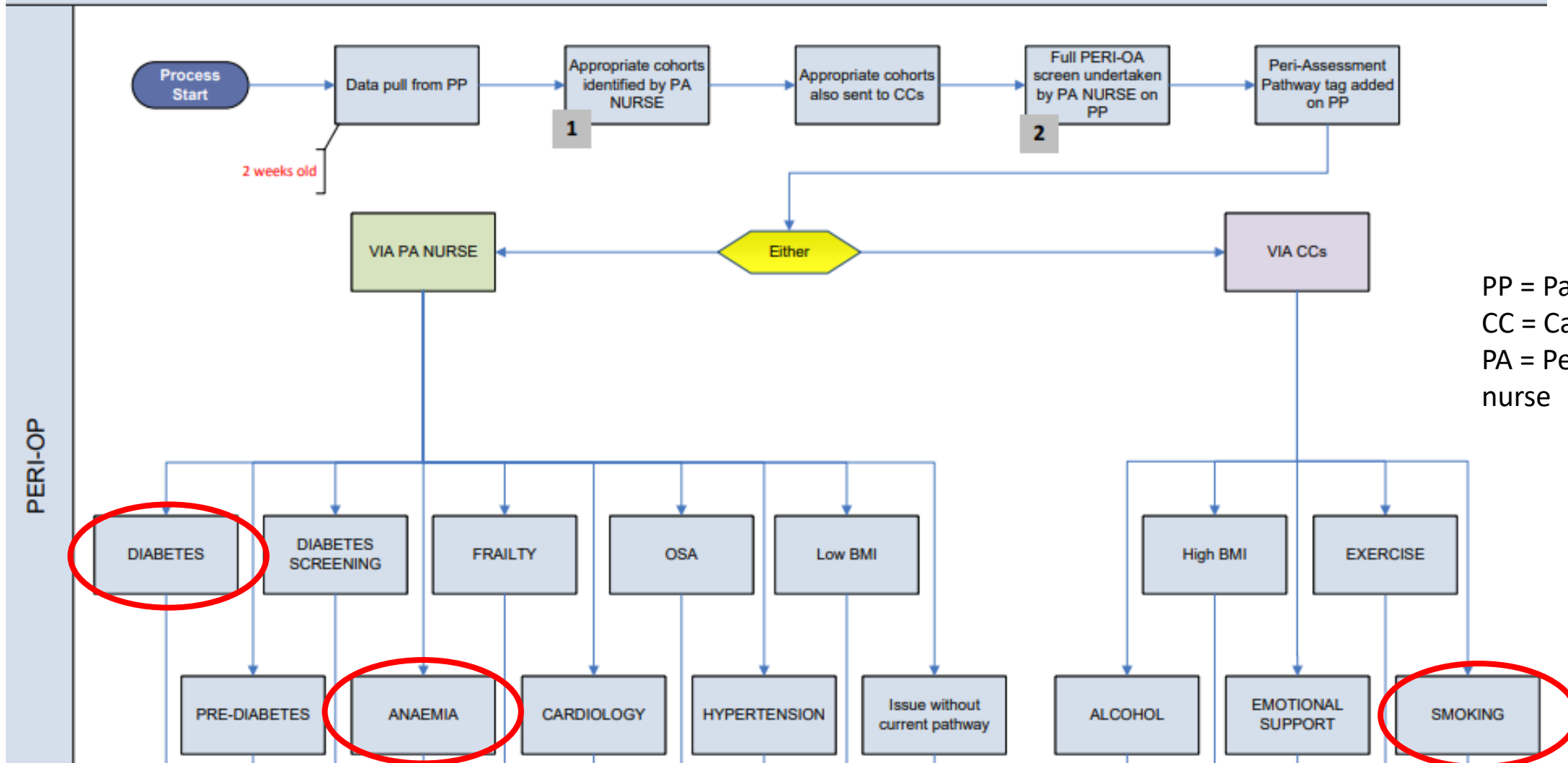
outstanding care  
listening and leading  
working together

Tom Teare – Somerset ICS perioperative lead  
CPOC Leads Meeting - May 7<sup>th</sup> 2024

# Somerset Pre-Screening & Optimisation for all MAJOR surgery - now LIVE



Map No 1 – Identification of patients by PA nurse (from PP data dashboard)

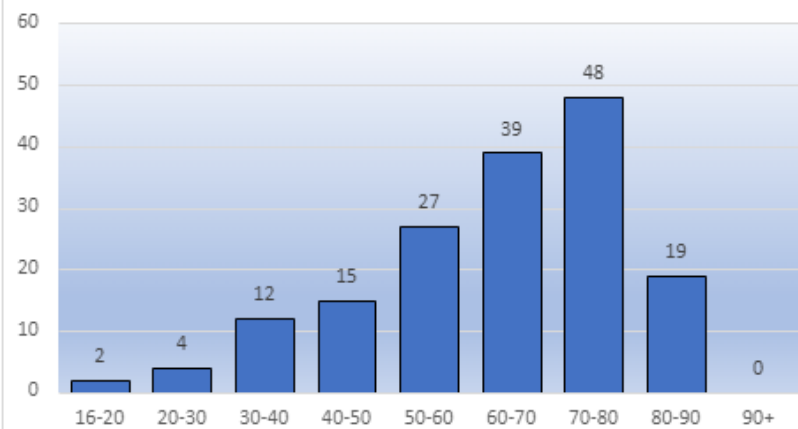


**Key**  
 PP = Pathpoint  
 CC = Care Coordinators  
 PA = Peri-Assessment nurse

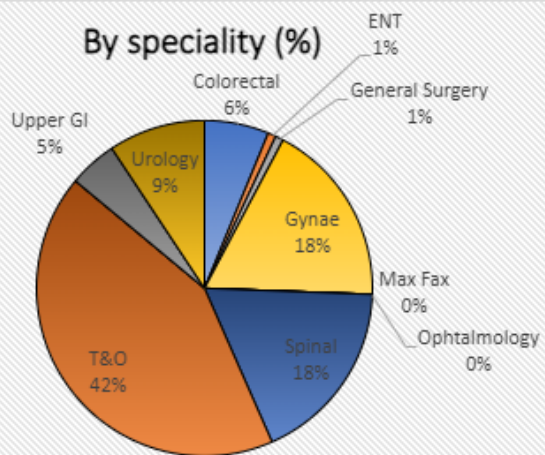
PERI-OP

# 166 patients in 10 weeks

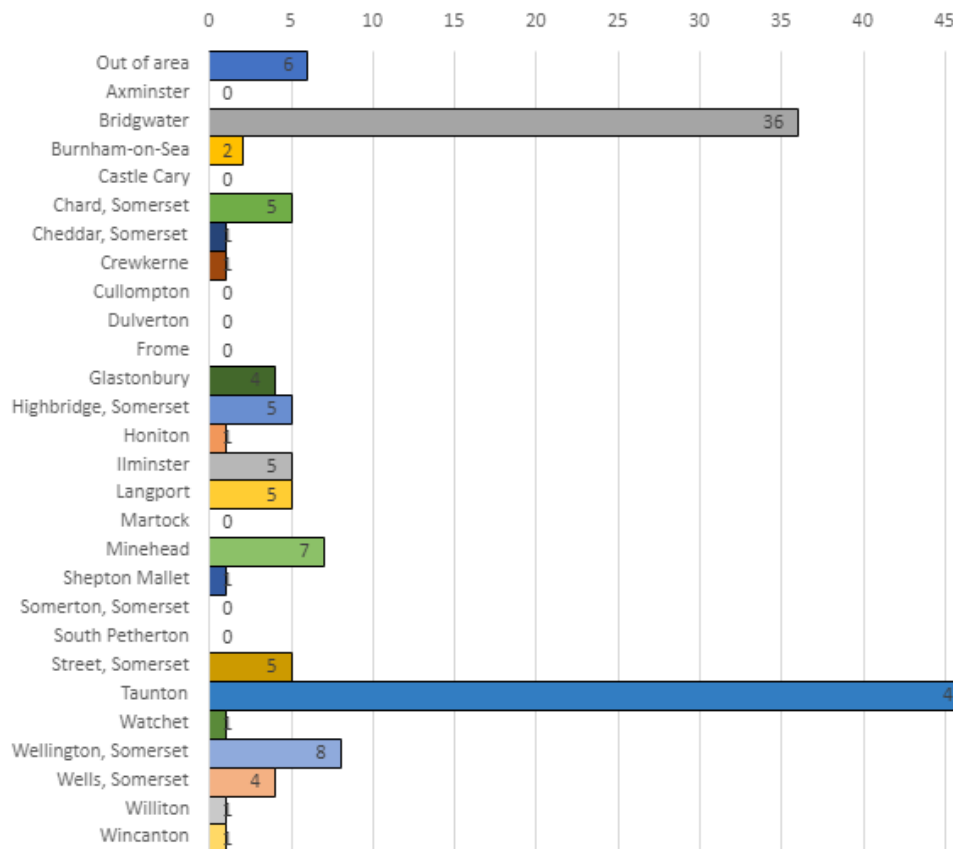
By age group



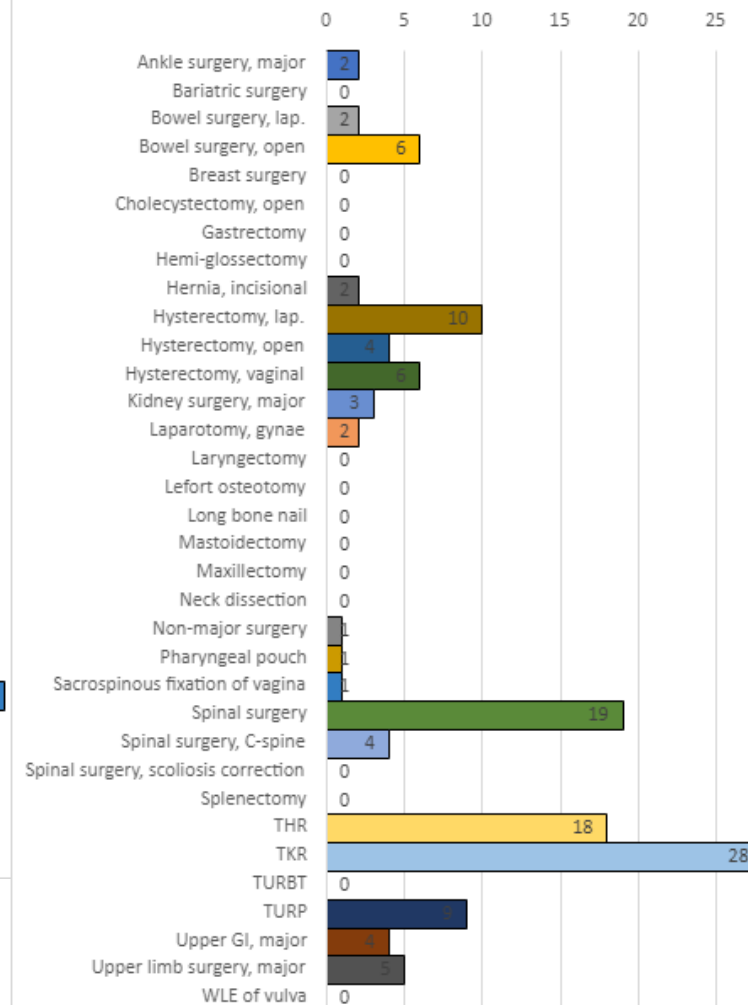
By speciality (%)



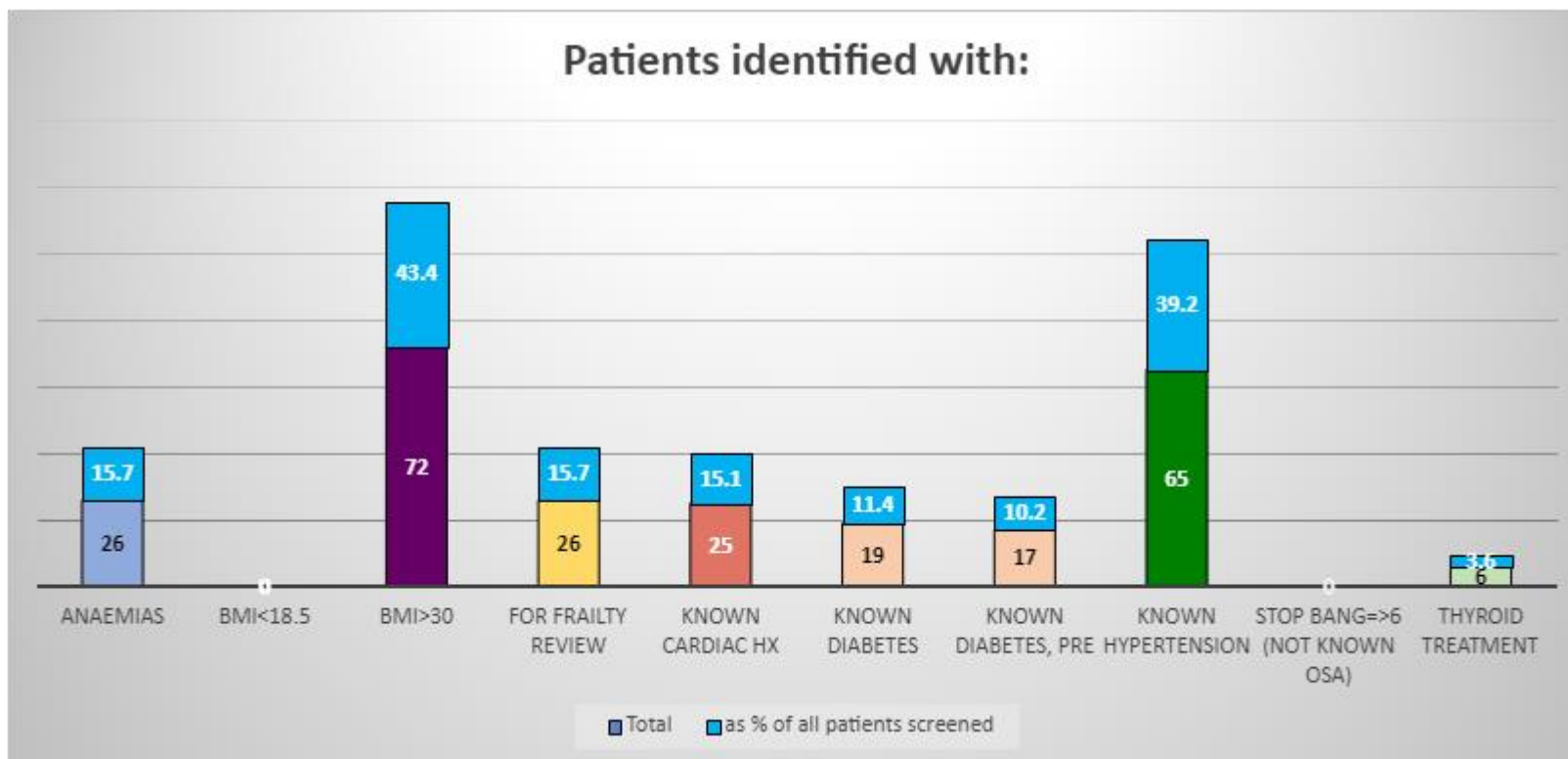
By postal town



By surgery type

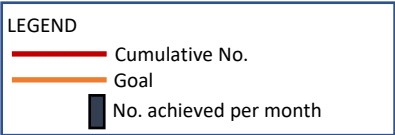
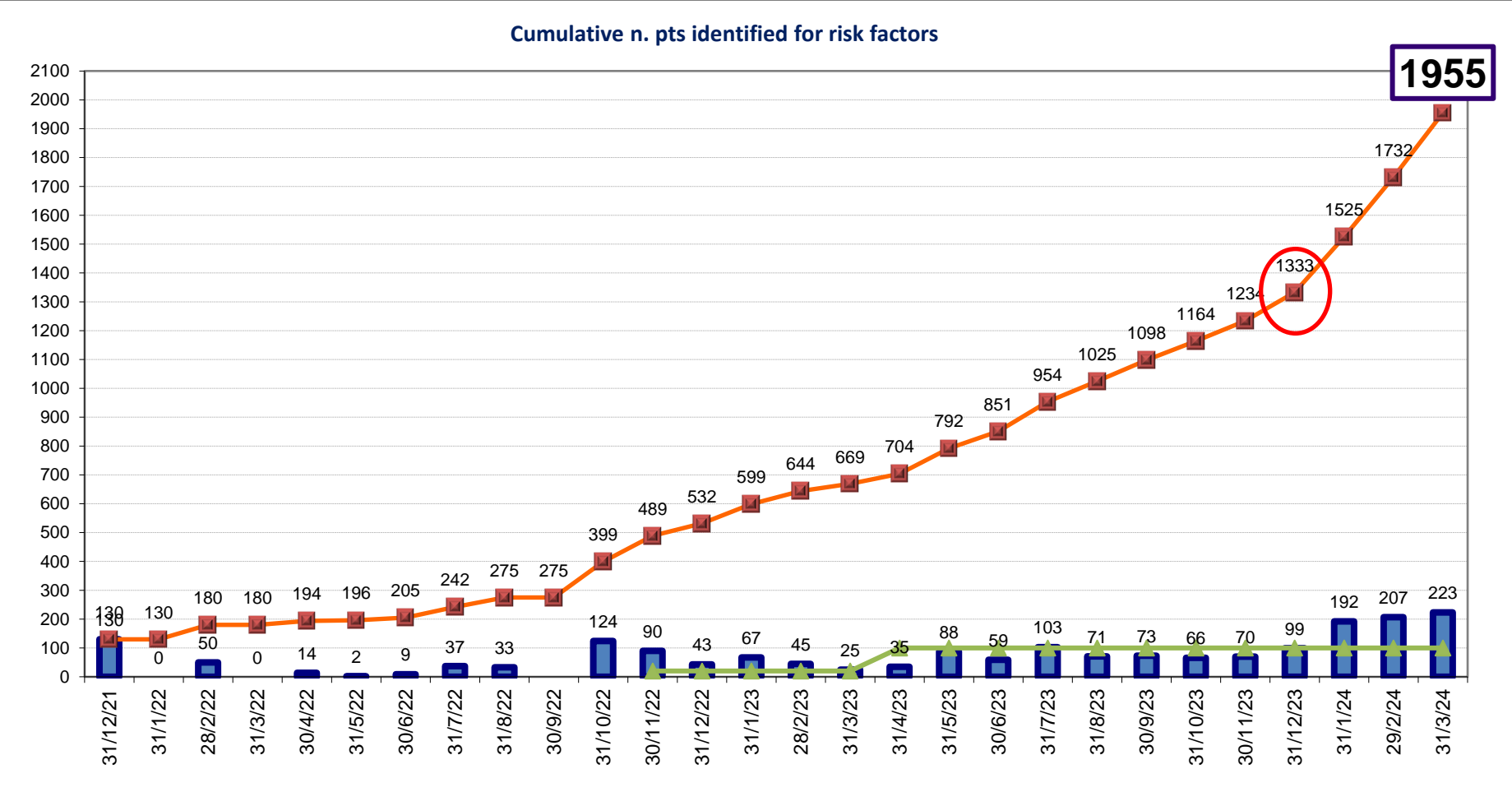


# Screening results



# Data Report – Patient Benefits

## Patients identified (for risk factors)



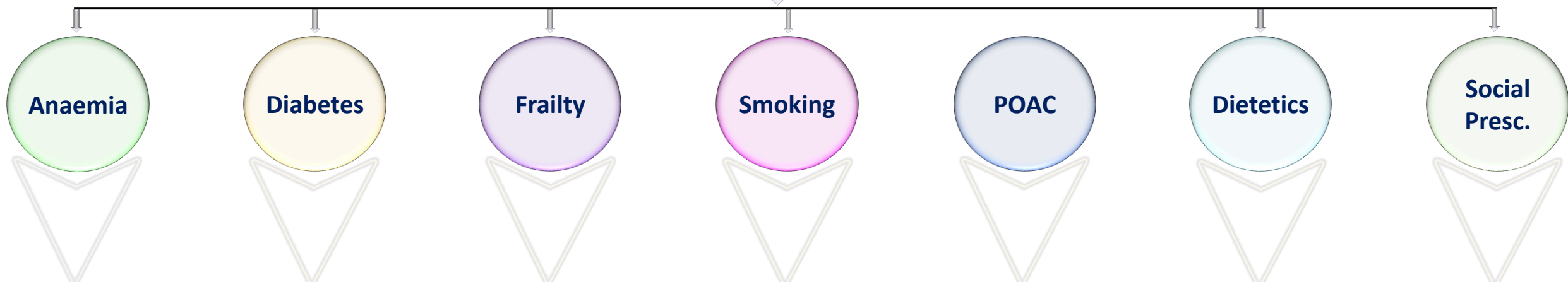
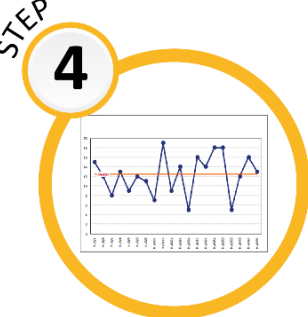
# Peri-Op Data Metrics

As of 25/03/24

Peri-  
Assessment  
Nurse



- No. pts identified
- No. pts screened
- No. pts with anaemia
- No. pts referred into anaemia pathway
- No. pts referred into diabetes pathway
- No. pts referred into Frailty pathway (from Pathpoint (PP))
- No. pts referred into Dietetics pathway (from Pathpoint (PP))



N. pts entering pathway  
 N. pts having oral iron  
 N. pts intravenous iron  
 N. pts identified at POAC via 'deferred for anaemia' tag  
 Transfusion rate  
 Re-admission rates  
 N. pts optimised

N. pts entering pathway  
 N. pts found at POAC with HBA1C over 69 (POAC) – ALL patients (not just major)  
 LOS – to be discussed  
 Re-Admissions - to be discussed  
 N. pts optimised

N. pts entering pathway  
 N. pts reviewed  
 N. pts attending MDT  
 N. pts with optimisation plan  
 N. pts deciding against surgery  
 LOS (in comparison with anticipated LOS)  
 N. pts with post surgical complications  
 Re-Admission rate  
 N. Outliers  
 Decisional regret @ 6 months

N. pts identified on PP as smokers  
 N. pts consented into programme

N. pts escalated for anaesthetic review weekly (SW)  
 N. pts identified as smokers at POAC

N. pts identified from other sources (other than PP)  
 N. pts engaging in nutrition optimisation

(metrics tbc)  
 Exercise  
 Alcohol  
 Emotional support  
 Weight Management  
 Health Coaches

# Current Peri-Op Resource

---

- Clinical Service Lead / POM
- Clinical Service Manager
- Operational Project Manager (WTE)
- Lead Digital Nurse (WTE)
- Lead Diabetes Nurse (0.8WTE)
- Senior Diabetes Nurse (0.4WTE)
- Diabetes Nurse (0.4WTE)
- Lead Frailty Nurse (WTE)
- Lead Anaemia Nurse (WTE)
- Peri-Assessment Nurse (WTE)
- Additional 3 workstream leads
- Peri-Operative Care Co-Ordinators x 2 (WTE)
- Project Support (WTE)
- Consultant Geriatrician
- Consultant Palliative Care (for SDM)
- Community Rehabilitation Support
  - Dietitian
  - Physiotherapist
  - Occupational Health
  - Pharmacist
- Quality Improvement support
- Patient Engagement Representative



# Thank you

- [thomas.teare@somersetft.nhs.uk](mailto:thomas.teare@somersetft.nhs.uk)